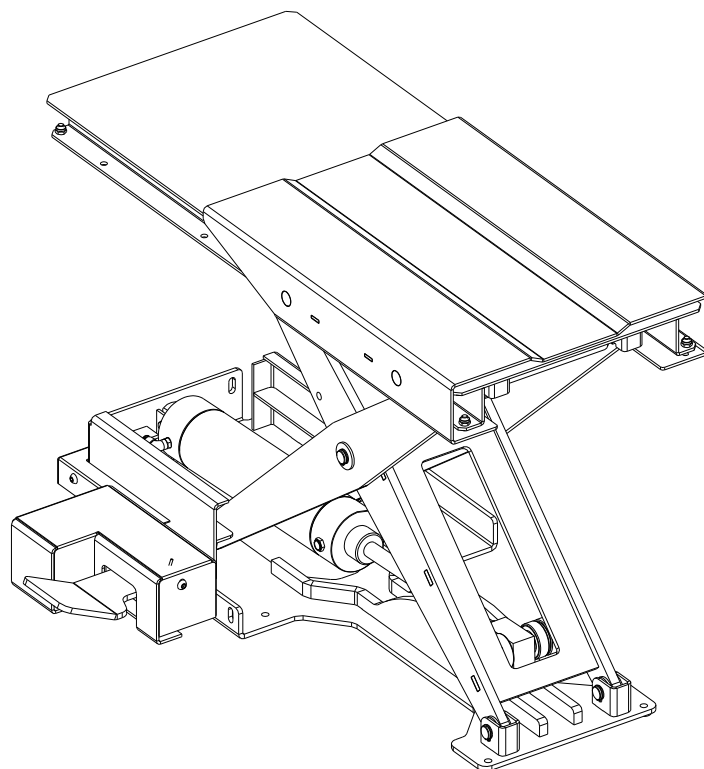


**OPERATION
MANUAL**

WHEEL LIFT

PFL-70



CONTENTS

1	GENERAL INFORMATION	3
2	PRODUCT DESCRIPTION	4
3	OPERATION AND USE N	6
4	MAINTENANCE	7
5	TROUBLESHOOTING	8
6	PARTS BREAKDOWN	9

CHAPTER 1 – GENERAL INFORMATION

This manual has been written to be used by shop technicians in charge (operator).

The operating instructions are considered to be an integral part of the machine and must remain with it for its whole useful life.

Read every section of this manual carefully before operating the lift.

The company is not liable for possible problems, damage, accidents, etc. resulting from failure to follow the instructions contained in this manual.

Only skilled technicians shall be allowed to carry out lifting, transport, assembling, installation, adjustment, calibration, settings, extraordinary maintenance, repairs, overhauling and dismantling of the lift.

THE MANUFACTURER IS NOT RESPONSIBLE FOR POSSIBLE DAMAGE TO PEOPLE OR OBJECTS IF SAID OPERATIONS ARE CARRIED OUT BY UNAUTHORIZED PERSONNEL OR THE LIFT IS IMPROPERLY USED.

Any use of the lift made by operators who are not familiar with the instructions and procedures contained herein shall be forbidden.

For a proper use of this manual, the following is recommended:

- keep the manual near the lift, in an easily accessible place.
- keep the manual in an area protected from the damp.
- use this manual properly without damaging it.
- Any use of the machine made by operators who are not familiar with the instructions and procedures contained herein shall be forbidden.

This manual is an integral part of the lift: it shall be given to the new owner if and when the lift is resold.

Operators must not be under the influence of sedatives, drugs or alcohol when operating the machine.

DECLARATION OF WARRANTY AND LIMITATION OF LIABILITY

The manufacturer has paid proper attention to the preparation of this manual. However, nothing contained herein modifies or alters, in any way, the terms and conditions of manufacturer agreement by which this lift was acquired, nor increase, in any way, manufacturer's liability to the customer.

TO THE READER

Every effort has been made to ensure that the information contained in this manual is correct, complete and up-to date. The manufacturer is not liable for any mistakes made when drawing up this manual and reserves the right to make any changes due the development of the product, at any time.

CHAPTER 2 - DESCRIPTION

2.1 DESCRIPTION (Ref. Figure 1)

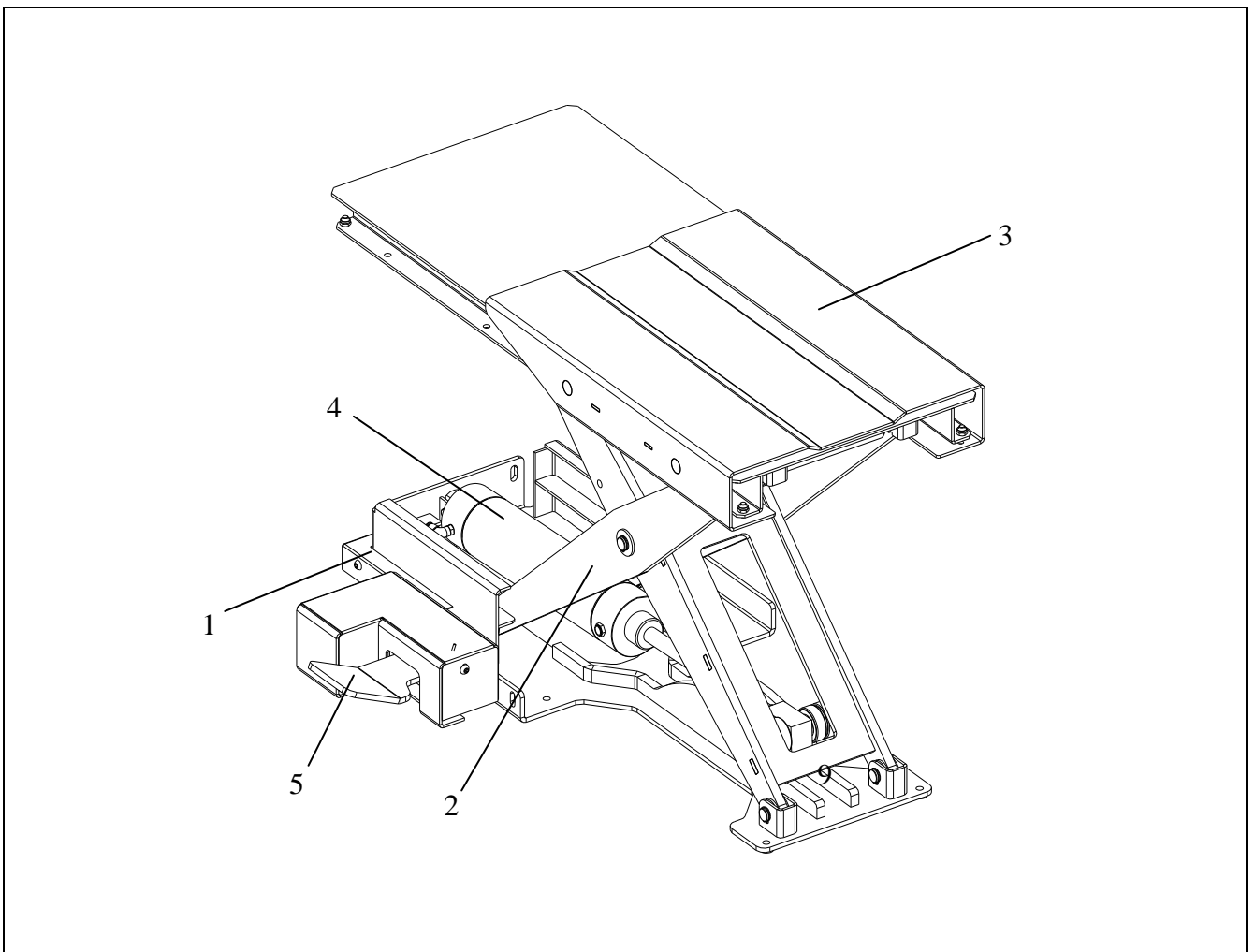
This pneumatic lift is designed as an accessory of wheel balancer, suitable for lifting motor wheel having maximum weight 70 kg / 154lbs.

The operation is described in detail in chapter 4.

This chapter describes the lift's principal elements, allowing the user to be familiar with the machine. As shown in figure 1, the lift is composed of the base (1), the scissor arms (2) and the table (3), driven by means of a pneumatic cylinder (4).

Raising/lowering motion is carried out by operation of the pedal (5) placed beside of the lift.

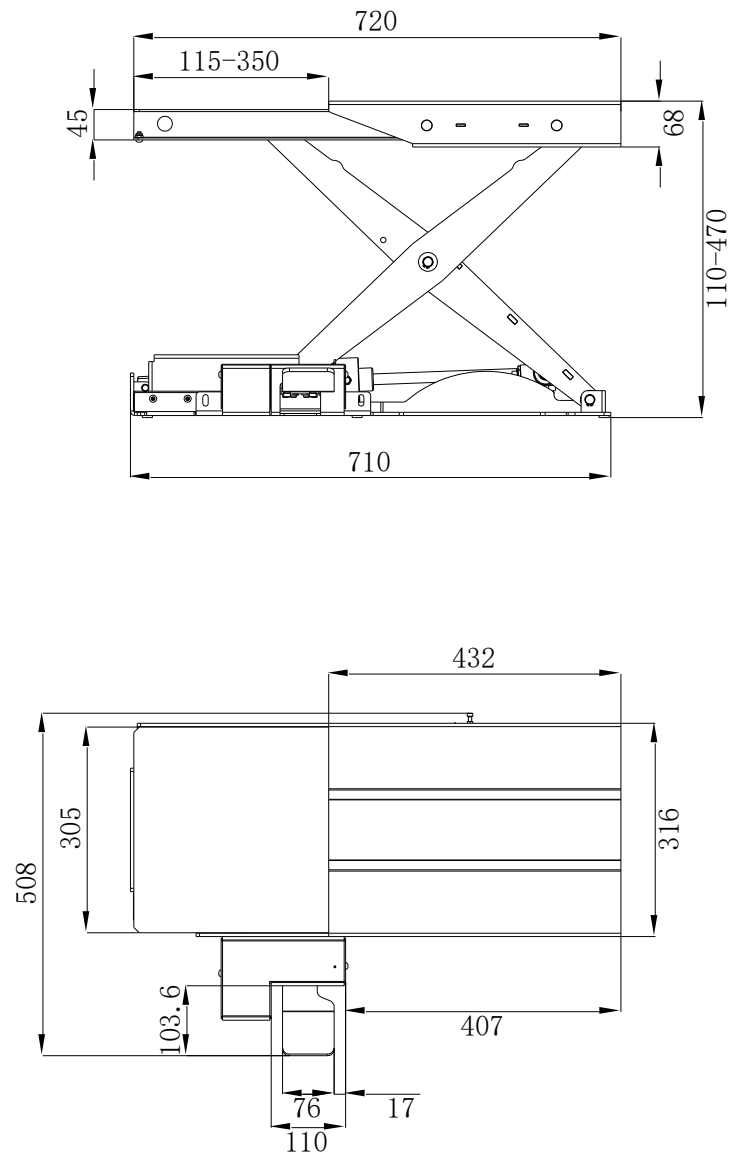
Figure 1



2.2 SPECIFICATION (Ref. Figure 2)

Lifting capacity	70 kg / 154 lbs
Max. lifting height	470 mm
Min. lowered height	110 mm
Required compressed air pressure	8bar – 10bar
Weight	43kg

Figure 2 - LAYOUT




CHAPTER 3 – OPERATION AND USE

3.1 PARTS ASSEMBLY

- Remove the components from the package;
- Check that the lift is in perfect condition, making sure that no parts are damaged or missing referring to the exploded drawings attached to this manual;
- Assembly the lift referring to the parts breakdown attached on this manual;
- Make sure all screws are tightened properly.

3.2 OPERATE THE LIFT

	<p>Never operate the lift with any person.</p> <p>Never exceed the rate lifting capacity.</p> <p>Never try to raise the lift over the rated lifting height!</p>
---	--

To operate the lift, do as follows:

- Release the pedal (5/fig.1) to lower the lift at the minimum height;
- Place the wheel on the table (3/fig.1);
- Raise the lift by press the pedal;

CHAPTER 4 - MAINTENANCE



Only trained personnel who knows how the lift works, must be allowed to service the lift.

To service properly the lift, the following has to be carried out:

- use only genuine spare parts as well as equipment suitable for the work required;
- follow the scheduled maintenance and check periods shown in the manual;
- discover the reason for possible failures such as too much noise, air blow-by, etc.

Refer to documents supplied to carry out maintenance:

- exploded views with all data necessary for spare parts ordering
- list of possible faults and relevant solutions.

4.1 ORDINARY MAINTENANCE

The lift has to be properly cleaned at least once a month. Use self-cleaning clothes.



The use of water or inflammable liquid is strictly forbidden

- Be sure the rod of the pneumatic cylinders is always clean and not damaged since this may result in leakage from seals and, as a consequence, in possible malfunctions.
- Check the sliders are greased properly.
- Check the chain is greased properly.

4.2 PERIODIC MAINTENANCE

Every 3 months	Pneumatic circuit	<ul style="list-style-type: none">▪ check oil level in the lubricator reservoir; refill with oil, if needed;▪ check the circuit for air leakage.
Every 6 months	Air valves	<ul style="list-style-type: none">▪ Check the reason for failure of valves
Every 12 months	General check	<ul style="list-style-type: none">▪ verify that all components and mechanisms are not damaged

CHAPTER 5 - TROUBLESHOOTING

A list of possible troubles and solutions is given below:

TROUBLE:	POSSIBLE CAUSE:	SOLUTION:
The lift does not raise	The air supply is not fed.	Feed the air supply.
	The air pressure is not sufficient.	Regulate the air pressure higher.
	The air leakage in the circuit.	Check proper connections the hoses (replace if damaged).
	The seal in the cylinder is faulty	Check and replace if necessary.
	The air valve is faulty	Check and replace if necessary.
The lifting capacity is not sufficient	The air pressure is not sufficient.	Regulate the air pressure higher.
	The air leakage in the circuit.	Check proper connections the hoses (replace if damaged).
	The seal in the cylinder is faulty	Check and replace if necessary.
The lift does not lower	The air valve is faulty	Check and replace if necessary.
The lift does not stop in standing position	The air leakage in the circuit.	Check proper connections the hoses (replace if damaged).
	The seal in the cylinder is faulty	Check and replace if necessary.